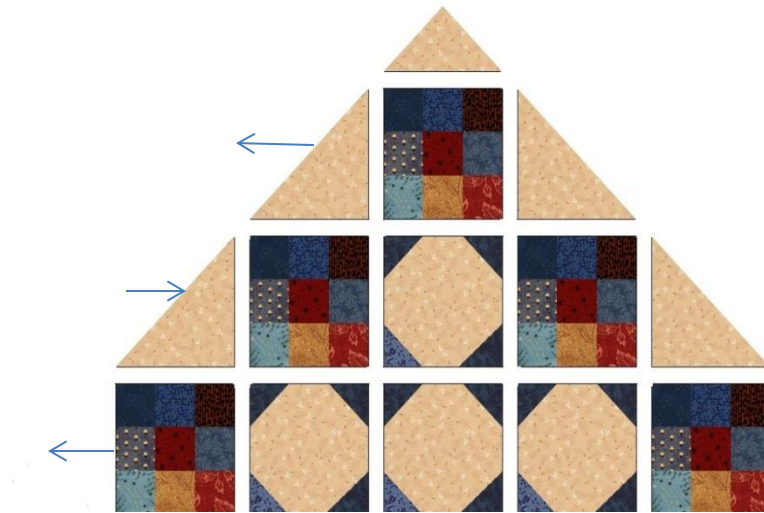


*Cutting Instructions:*

1. Using the Background (Cream) fabric cut (2)  $9 \frac{3}{4}$ " Square – cut diagonally TWICE.
2. Using the Background (Cream) fabric cut (1)  $5 \frac{1}{8}$ " Square – cut diagonally ONCE.

*Sewing Instructions:*

1. Sew the following blocks and rows together, as shown to make Corner "B". Make 2 Corner "B" Units and Label "Corner B".



Make 2 Corner "B" Units

2. Sew the above Corner "B" units to your quilt top center, as shown.



3. Next, sew on remaining corner "A" units, as shown:





*Cutting Instructions:*

1. Using the Background (Cream) fabric, cut (4) 6 1/2" x 18 3/4" rectangles for use in the **Outer Border**.

*Sewing Instructions:*

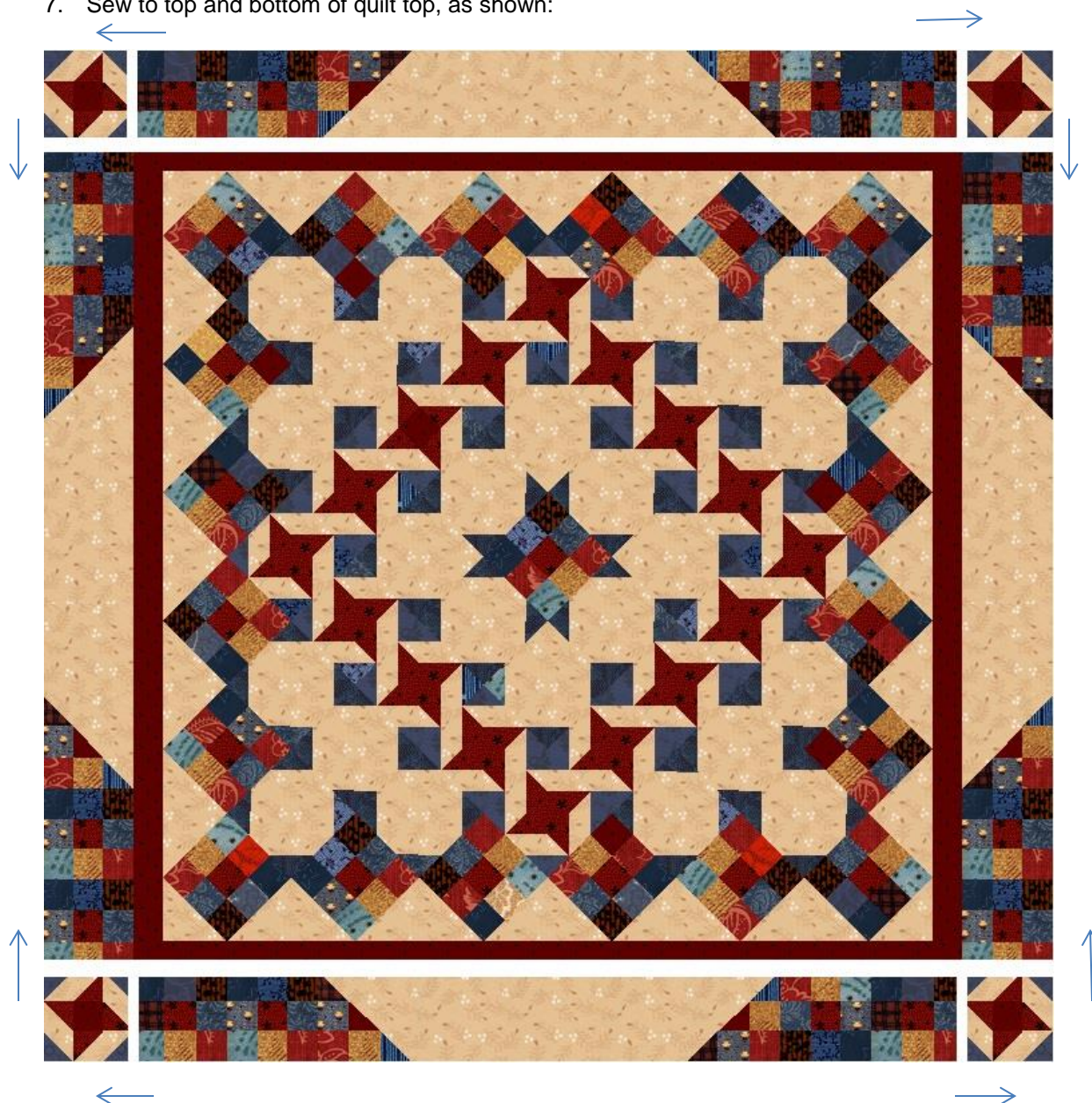
1. Sew **Inner Border** using 2 1/2" x WOF Red strips together end to end.
2. Measure and cut (2) 2 1/2" x 51 1/2" and sew **Inner Border** to sides of quilt top.
3. Measure and cut (2) 2 1/2" x 55 1/2" and sew **Inner Border** to top and bottom.  
(NOTE: For a more accurate border measurement, be sure to measure quilt top through middle of quilt to get cutting measurement!)
4. Sew (1) 7 1/2" x 18 3/4" CREAM strip between (1) "X" unit and (1) "Y" unit, as shown for the Outer Border.  
Make 4 **Outer Border** units.



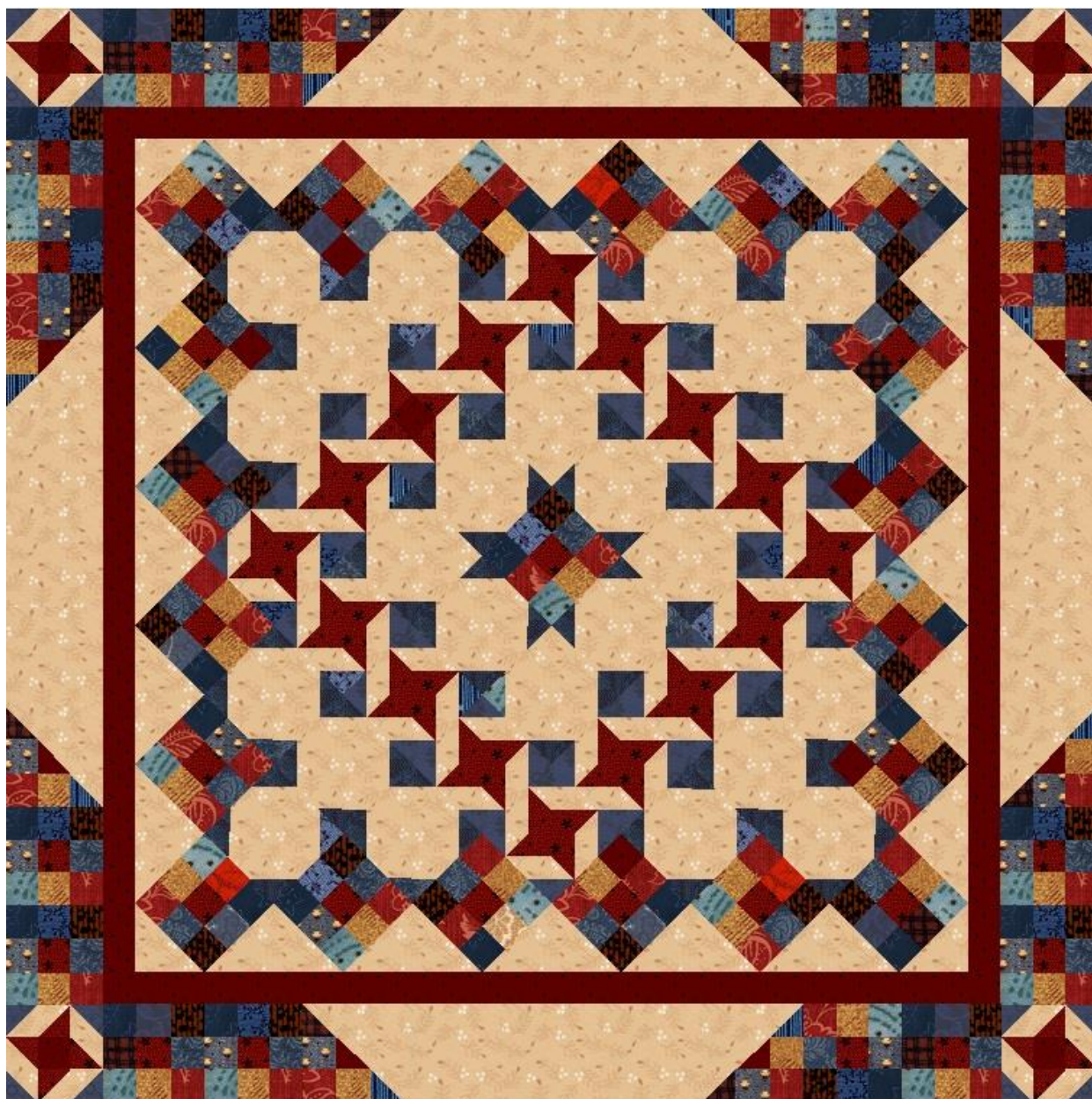
5. Sew an **Outer Border** unit to the two sides of quilt top.



6. Sew (1) Star Block to each end of remaining two **Outer border** units.
7. Sew to top and bottom of quilt top, as shown:







Mystery Solved!

**\*\* This ends Clue #7 \*\***